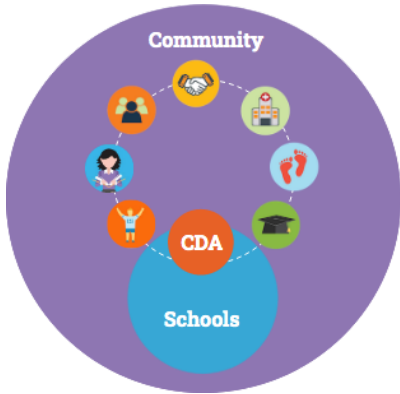


CLC ACTION PLAN



The CLC works with partners to bring our schools and the community together in support of the students, their families and the community. In 2020-21, we will focus on...

EARLY CHILDHOOD



Ensure that **families** have the **resources** to support their children's development (emotional, literacy, motor)

Sample Actions

- Information Capsules for preschooler's families
- Mother Goose 2.0 (Richmond & Danville)
- Free consultations with professionals for K4-K5 (DES)
- Parent workshops

STUDENT SUCCESS



Ensure that **students** have the tools to support their mental health and emotional **well-being** in a holistic perspective

Sample Actions

- Classroom projects
- Zones of regulation approach (ADS)
- "I Belong" Projects

COMMUNITY VITALITY



Support local service providers in **adapting** their services to meet the **real needs** of the English-speaking community

Sample Actions

- Presence on local committees and partnership tables
- Partnership for Community Vitality (Richmond & Danville)
- Comité accès en langue anglaise CIUSSS-MCQ

